

# POWERING

SAVING ENERGY ACROSS  
NORTH NORTHAMPTONSHIRE



# CHANGE

GRANTS AND SUPPORT FOR BUSINESS AND COMMUNITY  
ORGANISATIONS TO SAVE ENERGY AND CUT CARBON



Funded by  
UK Government



Urban  
Foresight



North  
Northamptonshire  
Council



Smart  
Carbon

# HOUSEKEEPING



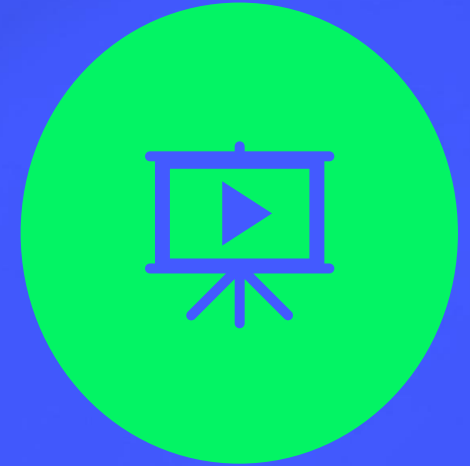
**All attendees  
are muted**



**Introduce yourself in  
the chat window**



**Post questions to our  
presenters in the  
chat window**



**The event is being  
recorded and will be  
made available**

**WELCOME!**

**NORTH**

**NORTHAMPTONSHIRE**

**POWERING**

**CHANGE**



# AGENDA

---

**11.00** Introduction to Powering Change

---

**11.05** Grants information and guidance

---

**11.25** What is a carbon footprint?

---

**11.30** Net zero vs. carbon neutrality

---

**11.35** Carbon reporting

---

**11.45** Your Carbon Reduction Plan

---

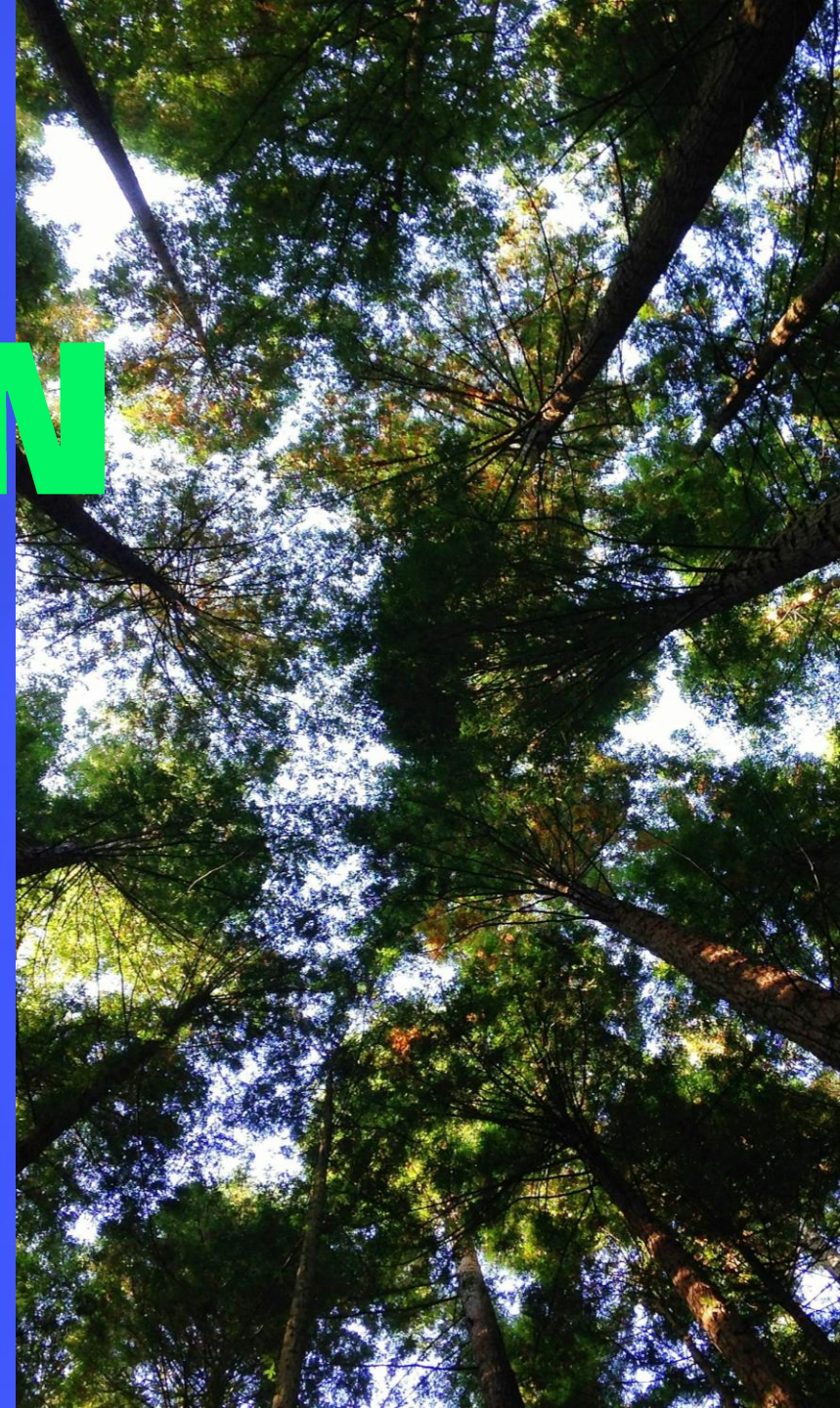
**11.50** Q&A?

---

# INTRODUCTION

**This project is funded by the  
UK Shared Prosperity Fund**

**UKSPF is a UK government programme that  
provides local investment funding to improve  
pride in place and increase life chances,  
focusing on communities and place, local  
businesses, and people and skills**



# WHO WE ARE



**Urban Foresight** is the UK's leading place-based innovation consultancy. We work around the world on projects that improve lives, protect the environment, and create new economic opportunities.

**ANNELIESE ALLEN-NORRIS, PRINCIPAL CONSULTANT**



**SmartCarbon** has supported around 1,000 clients to measure, report and reduce their carbon emissions since 2019, working to bring organisations 'on TRACC' for net zero by 2050 (or sooner).

**MOLLY WOODS, NET ZERO PROJECT MANAGER**

# WHAT IS POWERING CHANGE?

# POWERING CHANGE

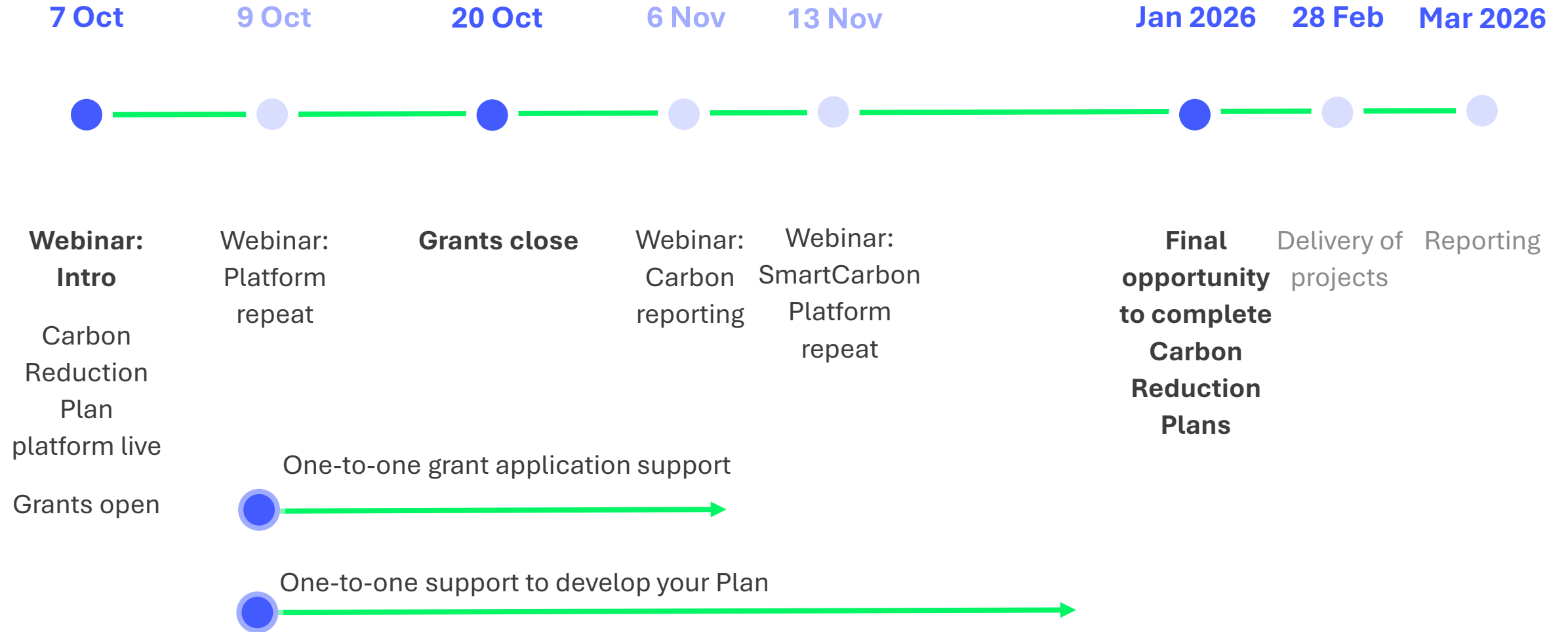
**A new programme of grants and support to cut carbon**

**Free programme** designed to help businesses and community organisations take meaningful steps toward decarbonisation.

## WHAT IS ON OFFER

- Access to decarbonisation grants and help with your application
- A series of educational webinars
- One-on-one support to help you understand your carbon footprint and energy use
- Access to a free tool to develop a tailored Carbon Reduction Plan for your organisation

# WHEN?



# GRANTS

**Apply on the North  
Northants Council website**

[www.northnorthants.gov.uk/grants/powering-change-energy-efficiency-grants-businesses](http://www.northnorthants.gov.uk/grants/powering-change-energy-efficiency-grants-businesses)

[www.northnorthants.gov.uk/grants/powering-change-energy-efficiency-grants-community-organisations](http://www.northnorthants.gov.uk/grants/powering-change-energy-efficiency-grants-community-organisations)



# SUPPORT FOR GRANT APPLICATIONS

**Grants close**

**20 October 2025**

**at 12 noon**

**Applications are all reviewed by a panel**

Step-by-step support is available with technical guidance where needed.

- Book in one-to-one sessions through our website
- Email us with your questions:  
[PoweringChange@urbanforesight.com](mailto:PoweringChange@urbanforesight.com)



# BUSINESS GRANTS

## £1,000 to £5,000

Total available of **£50,000**

Minimum **50% match** requirement (e.g. £10k project, £5k match)

## Funds projects that

- increase energy efficiency
- reduce greenhouse gas emissions

## Eligibility

- SME based in North Northamptonshire
- Trading for more than 12 months on the application deadline date
- Not have received another grant from North Northamptonshire Council in 2025/26

## YOU MUST

- Have planning permission already or have already applied (only if required)
- Provide at least one quote (or three quotes if total works > £5,000)
- Spend grants by 28<sup>th</sup> February 2026
- Claim in arrears

## Monitoring

Successful grants must comply with appropriate monitoring systems, including a final report and relevant documentation such as receipts.

The business must commit to providing relevant energy bills for 12 months before and after installation.

# WHAT CAN BE FUNDED?

## YES

- lighting and lighting controls
- heating and heating controls
- insulation
- energy efficient machinery and equipment (e.g. air compressors)
- solar panels
- heat pumps
- biomass boilers
- energy storage
- building energy management systems

## NO

- computers, laptops, and tablets
- transport-related measures (e.g. electric cars and charging points)
- repairs of existing equipment (e.g. boilers)
- installation of smart meters
- landlord obligations
- costs that can be claimed back from elsewhere (e.g. VAT)
- costs that are not auditable (e.g. cash payments that are unsupported by an approved financial system)
- costs towards banking charges or repayment of debt
- retrospective costs (e.g. activities already completed, or costs incurred before the agreed funding start date)

# COMMUNITY ORGANISATION GRANTS

Up to **£15,000**. **No match** funding requirement

## **Funds must be used for**

- upgrades to improve energy efficiency (e.g. LED lights, timers, solar panels, heating upgrades)
- community transport, or
- other energy saving measures (e.g. insulation, water saving devices, thermostats)

## **Partners**

Joint applications between organisations are welcomed as it can help deliver and enhance projects

- One organisation needs to apply and take the lead during the application process.

## **ELIGIBILITY**

- parish councils
- charities
- community and voluntary groups
- clubs
- not-for-profit organisations

School PTAs, 'Friends of' groups, health charities and religious bodies can also apply if their project benefits the wider community and supports the Council's aims.

# COMMUNITY ORGANISATION GRANTS

## MUST

- demonstrate value for money (environmental, social and economic)
- identify and quantify beneficiaries and impact of investment
- provide at least two quotes within four weeks of grant closing
- spend grants by 28<sup>th</sup> February 2026
  - 50% of the grant payment will be made on receipt of a signed agreement
  - 50% on receipt of evidence of paid invoices

## SHOW

- planning permission or that you have already applied (only if required)
- how ongoing sustainability will be achieved
- how your measures of success and how you will record and monitor them

## Monitoring

- Successful grants must comply with appropriate monitoring systems, including a final report and relevant documentation such as receipts.

# GRANTS GUIDANCE



# APPLICATION GUIDANCE

## Competitive process

### What do I need to demonstrate?

- **DELIVERABILITY:** quotes, detailed timescales, completion by 28<sup>th</sup> February 2026
- **ENERGY IMPACT:** detailed, clear impact on energy use and carbon reduction. **Part of a wider strategy to reduce energy use / ongoing sustainability**
- **BUSINESS RESILIENCE AND GROWTH:** detailed, clear impacts and part of a wider strategy to support business resilience and growth.
- **FOR COMMUNITY GROUPS:** project will benefit and meet the needs of the community
- **NEED:** strong evidence of need and project would not proceed without funding



# ENERGY AND EMISSIONS IMPACT

## TECHNICAL SUPPORT

Your **CARBON REDUCTION PLAN** shows overall energy use and emissions

→ **Complete the online form to get on the platform**

We can help demonstrate the impact on energy use and emissions of individual measures

→ Book in one-to-one sessions through our website

### **Thinking about solar?**

We can calculate your solar potential

→ Number of panels and generation kWh

→ Estimated emissions and financial savings



# BUSINESS GRANT APPLICATION



# BUSINESS APPLICATION

- ✓ Describe the project
- ✓ Explain the impacts
- ✓ Estimate the carbon reductions

## Powering Change - Energy efficiency grant for businesses application

Introduction Company information **Project 1** Funding package Milestones and delivery Supporting evidence Declaration

Project name \*

Description of project \*

Maximum 2000 characters. What is the problem that is being addressed and what will the project achieve?

Project start date \*

We anticipate decisions on projects by end of November. Please do not start your project until you hear about the outcome of your grant application.

Day	Month	Year
<input type="text" value="DD"/>	<input type="text" value="MM"/>	<input type="text" value="YYYY"/>

Project end date \*

Projects must be completed by 28 February 2026.

Day	Month	Year
<input type="text" value="DD"/>	<input type="text" value="MM"/>	<input type="text" value="YYYY"/>

Impact of the project - outputs/outcomes \*

Maximum 2000 characters. Please describe the impact of this project on your business and describe your measures of success.

Amount of commercial space completed or improved \*

Please enter in square meters.

Number of low or zero carbon energy infrastructure installed \*

Estimated carbon dioxide equivalent reductions as a result of support \*

Tonnes of CO2

← Previous

✖ Cancel

Next →

# BUSINESS APPLICATION

- ✓ Key dates and timelines
- ✓ How will you make sure the project is delivered
- ✓ Is planning permission needed?

## Powering Change - Energy efficiency grant for businesses application

Introduction Company information Project Funding package **Milestones and delivery** Supporting evidence Declaration

Please set out the key milestone for project delivery \*

Maximum 2000 characters.

Please describe how the project will be delivered and the management controls in place to ensure successful delivery \*

Maximum 2000 characters.

Does your project require planning permission or other licenses? \*

< Previous

✕ Cancel

Next >

# COMMUNITY GRANT APPLICATION



# COMMUNITY APPLICATION

- ✓ Describe the project
- ✓ Is planning permission needed?
- ✓ What themes does the project meet?
- ✓ Explain the impact on energy and carbon
- ✓ How does it benefit the local community

## Powering Change - Energy efficiency grant for community organisations application

Introduction Organisation **Project** Funding Supporting evidence Declaration

Project title \*

Does the project require planning permission \*

Yes

No

Briefly summarise your project proposal \*

Maximum 2000 characters

Which themes your project proposal meets \*

Select all that apply

Community facility upgrades to improve energy efficiency (e.g. LED lights and timers, solar panels, heating upgrades)

Community transport - reducing emissions

Other energy saving measures (eg Insulation, Water Saving Devices, Thermostats)

Please describe how your project will improve energy efficiency and reduce carbon \*

Please describe how your project will benefit and meet the needs of the community \*

Maximum 2000 characters

Who is your project aimed at within the local community? \*

Who will benefit from your project? New or existing service users or clients? Include numbers of beneficiaries. Maximum 2000 characters.

[← Previous](#) [✕ Cancel](#) [Save](#) [Next →](#)

# COMMUNITY APPLICATION

- ✓ How will you measure success?
- ✓ Legacy and sustainability

Success and evaluation - describe your measures of success and how you will record and monitor them \*

Include how you will evaluate the success of your project. Maximum 2,000 characters

Legacy and sustainability - describe what will happen once your project is complete and state how ongoing sustainability will be achieved \*

Maximum 2,000 characters

What would be the impact on the project if grant funding was not awarded? \*

Please describe any additional information that would benefit your application

Maximum 2,000 characters

◀ Previous

✕ Cancel

📄 Save

Next ▶

# COMMUNITY APPLICATION

- ✓ Upload quotes
- ✓ Quotations for work necessary to complete the project should be submitted within four weeks after the funding closing date, with a minimum of two quotations required for each project

## Powering Change - Energy efficiency grant for community organisations application

Introduction Organisation Project Funding Supporting evidence Declaration

Upload the following supporting evidence:

- public liability insurance (minimum £5 million)
- constitution or governing documentation
- equality policy
- year end accounts (Audited Year End Accounts)
- child protection statement (if applicable)
- vulnerable adults statement (if applicable)
- quotations for work necessary to complete the project should be submitted within four weeks after the funding closing date, with a minimum of two quotations required for each project or its components (where applicable)

Public liability insurance (minimum £5 million)

Maximum file size 5MB

Drop files here to upload -

Uploaded: 0 of 1

Constitution or governing documentation

Maximum file size 5MB

Drop files here to upload -

Uploaded: 0 of 1

Equality policy

Maximum file size 5MB

Drop files here to upload -

Uploaded: 0 of 1

Year end accounts (audited)

Maximum file size 5MB

Drop files here to upload -

Uploaded: 0 of 1

Child protection statement

Maximum file size 5MB

Drop files here to upload -

Uploaded: 0 of 1

Vulnerable adults statement

Maximum file size 5MB

Drop files here to upload -

Uploaded: 0 of 1

Quotations for work necessary to complete the project

Maximum file size 5MB

Drop files here to upload -

Uploaded: 0 of 1

Additional supporting evidence

Maximum file size 5MB

Drop files here to upload -

Uploaded: 0 of 1

If you cannot upload additional evidence, this can be emailed to us at [communityfunding@northnorthants.gov.uk](mailto:communityfunding@northnorthants.gov.uk) (maximum 15MB per email).

Please state in the email subject line 'Powering Change - Energy efficiency grant application for Test'

# WHAT ABOUT PLANNING?

## Permitted Development Rights

### Not everything requires planning permission

- If your project requires planning permission, an application must have been submitted prior to the funding deadline
- Some low carbon technologies are “permitted development” where certain conditions are met
- Be careful as rules are different for homes and commercial buildings: seek pre-application advice



# PERMITTED DEVELOPMENT RIGHTS AND PLANNING

**Rooftop solar PV** is a permitted development where:

- Solar panels project no more than 200mm from the wall surface or roof slope
- Panels installed on a flat roof are not be more than one metre above the highest part of the roof
- Roof mounted panels are not within one metre of the external edge of the roof.
- The building is not listed or within the grounds of a listed building, or on a site designated as a scheduled monument.

The solar panels must, so far as practicable, be sited so as to minimise its effect on the external appearance of the building and the amenity of the area.

If >50kW (this is VERY big!) you must apply to the Council to check if approval is needed on the design or appearance of the development.

Information on permitted developments and planning permission requirements is available at:

[www.planningportal.co.uk/](http://www.planningportal.co.uk/)

# FINDING REPUTABLE INSTALLERS AND GETTING QUOTES

The screenshot displays the MCS Certified website's installer search interface. At the top, there is a navigation menu with links for Consumers, Installers, Product, Certification Bodies, Who We Are, MCS Data & Stories, News & Events, Contact Us, and Accessibility Tools. Below the navigation, the page is organized into three main sections:

- SEARCH BY INSTALLER:** A search bar with the placeholder text "Search by installer name or certification number" and a "QUICK SEARCH" button.
- SEARCH BY TECHNOLOGY AND YOUR LOCATION:** A section titled "What technology would you like to install?" with a sub-instruction: "Firstly, select which technology you are interested in installing. You can select more than one." It features a grid of 12 technology selection buttons: Select All Technology Types, Select All Heat Pumps, Air Source Heat Pump, Battery Storage, Biomass, Exhaust Air Heat Pump, Ground/Water Source Heat Pump, Micro CHP, Small Wind Turbine, Solar Assisted Heat Pump, Solar Heating, and Solar PV. A "SELECT LOCATION" button is at the bottom right of this section.
- SEARCH RESULTS:** A list of installers with their names and distances from the user's location. The results shown are:
  - ACL Group Ltd (0.37 Miles Away)
  - Corvee Property Services Ltd (0.53 Miles Away)
  - RF Blount & Sons Ltd (1.1 Miles Away)
  - Griffiths Air Conditioning & Electrical Contractors (3.45 Miles Away)
  - Keki Building Services Ltd T/A Keki Energy Solutions (3.91 Miles Away)
  - K Lewington Heating & Gas

On the right side of the results, there is a "Show 90 results" dropdown and a "List View" / "Map View" toggle. Below this is a map showing the geographical distribution of installers with yellow location pins. The map includes a "Map" / "Satellite" toggle and a "Google" logo at the bottom left. At the bottom of the map, there are links for "Keyboard shortcuts", "Map data ©2025 Google", "Terms", and "Report a map error".

<https://mcscertified.com/find-an-installer/>

# FINDING REPUTABLE INSTALLERS AND GETTING QUOTES

**TRUSTMARK** [www.trustmark.org.uk](http://www.trustmark.org.uk)

If a business is TrustMark registered, it is working to a Code of Practice set down by an approved Scheme Provider. TrustMark Registered Businesses are thoroughly checked, vetted and monitored to make sure they meet standards in technical competence, customer service and trading practices.

The screenshot shows the TrustMark website interface. At the top, there are search filters for 'What do you need?' (Loft Insulation X, Wall Insulation X) and 'Where are you?' (Kettering, UK X). A 'Search' button is visible. Below the filters, the search results for 'Loft Insulation' and 'Wall Insulation' are shown, with a business location of 'Kettering, UK + 30 miles'. The main result is for 'Sureserve Energy Services UK Limited', which is located in Market Harborough, Leicestershire, 9.39 miles from the user. It has been a TrustMark member for 4 years. The trades listed include Loft Insulation, Wall Insulation, Ground Source Heat Pump, Air Source Heat Pump, and Cavity Wall Insulation. Contact information includes the phone number 01506 638600 and the website www.everwarmgroup.com. To the right of the text is a map showing the location of Market Harborough and Kettering, with several pins indicating other nearby businesses.

# FINDING REPUTABLE INSTALLERS AND GETTING QUOTES

## NON-DOMESTIC ENERGY SUPPLIER SCHEMES

Energy suppliers may also be able to provide quotes and installations. For example:

**OCTOPUS GREENWORKS** <https://octopus.energy/greenworks-business-low-carbon/>

As a non-domestic customer, you may also be eligible for the **Boiler Upgrade Scheme**. Current grants are available for:

- £7,500 towards an air source heat pump
- £7,500 towards a ground source heat pump (including water source heat pumps and those on shared ground loops)
- £5,000 towards a biomass boiler

# IMPACT OF YOUR PROJECT

Installers of low carbon tech and energy efficiency improvements should provide details of the impact of the intervention

Your **SmartCarbon Carbon Reduction Plan tool** will also help you:

- Get started on your Carbon Reduction Plan to understand the basic breakdown of your energy use and emissions
- Start setting actions to tackle the priority areas in your organisation
- Help to demonstrate your wider and longer term decarbonisation plans for your grant application

Our **solar potential modelling** can help you estimate your carbon and financial savings before you get a quote from an installer

- Get in touch and we can run the numbers



# QUESTIONS



# INTRODUCTION TO SMARTCARBON



WITH

**MOLLY WOODS**,  
NET ZERO PROJECT MANAGER

[m.woods@smartcarboncalculator.com](mailto:m.woods@smartcarboncalculator.com)



# BRINGING ORGANISATIONS ON “ON TRACCT™” FOR NET ZERO BY 2050



## Proven expertise in carbon accounting

Join our courses through  
Northumbria University

<https://www.northumbria.ac.uk/study-at-northumbria/continuing-professional-development-short-courses-specialist-training/carbon-champion-carbon-footprinting-management-and-reporting/>



## Comprehensive reporting platform

For the entire value chain:

[Carbon Reporting Software | SmartCarbon Calculator](#)



## Client focussed support

For guiding Net Zero measurement and  
decarbonisation strategy

[l.jackson@smartcarboncalculator.com](mailto:l.jackson@smartcarboncalculator.com)

# What Is a **Carbon Footprint**, and Why Should We Calculate It?



# WHAT IS A CARBON FOOTPRINT?

The Greenhouse Gas Protocol defines a carbon footprint as:

*“The total set of greenhouse gas emissions (GHG) caused directly and indirectly by an individual, event, organisation, or product expressed as CO<sub>2</sub>e.”*

# WHAT IS A CARBON FOOTPRINT?

- Includes all 7 greenhouse gases – carbon dioxide, methane, nitrous oxide, and 4x fluorinated gases
- Measures all gases in kgCO<sub>2</sub>e - the equivalent quantity of carbon dioxide that would have the same global warming potential
- Carbon dioxide: most prevalent greenhouse gas (75%). Of that, around 75% comes from the burning of fossil fuels.
- Methane: less abundant (18%). Mainly arises from livestock digestive processes and decomposition, e.g. landfill. However, 27x as potent as carbon dioxide in terms of trapping heat.
- Nitrous Oxide: small amount (4%) but is 273x as potent. Main contributor is fertiliser.
- Fluorinated gases: small amount (2%), but are 10,000x plus as potent. Refrigeration and air conditioning are common sources.



# Net Zero and Carbon Neutrality



# CARBON NEUTRAL

Kyoto Protocol (1997) - market-based mechanisms for carbon reductions

Your carbon emissions = carbon removals (or carbon avoidance or reduction) elsewhere

Can be achieved immediately through purchase of offsets

Up to 100% of GHG emissions

Only needs to cover scope 1 and 2

PAS 2060 (only on available)

## VS

# NET ZERO

**ORIGIN**

The term linked to the Paris Agreement (2015) - limit global warming to below 1.5 C.

**MEANING**

Your (residual) carbon emissions = carbon removals elsewhere

**TIMING**

Carbon reduction is required first so organisations set s target Net Zero date. Offsetting relates to residual emissions.

**DEGREE OF OFFSETTING**

Max 10% of greenhouse gas emissions

**COVERAGE**

Has to cover scopes 1, 2 and 3

**CERTIFICATION STANDARD**

e.g. Science Based Target Initiative (SBTi)

# Carbon Reporting



# WHY MEASURE?

## Because it helps you be more effective in reducing your carbon footprint:

- Discover the carbon impact of different parts of your organisation
- Prioritise action that reduces the highest impact areas
- Set targets and strategies for carbon reduction
- Monitor success against targets

## Because others might require you to do so:

- Regulators
- Customers
- Funders



# WHY MEASURE?

## Working for the public sector – Policy Procurement Notes

- 'PPN 006' requires companies bidding for major government contract to have a Carbon Reduction Plan
- Includes scope 1, 2, and some scope 3 emissions, and a plan to meet the UK's 2050 Net Zero target
- Mandatory for contracts >£5m, including frameworks
- Optional for smaller contracts – public sector bodies are increasingly requiring suppliers to submit a CRP in this form
- Carbon Reduction Plans comply with PPN 006, meaning you are ready to compete for contracts



# Your Carbon Reduction Plan



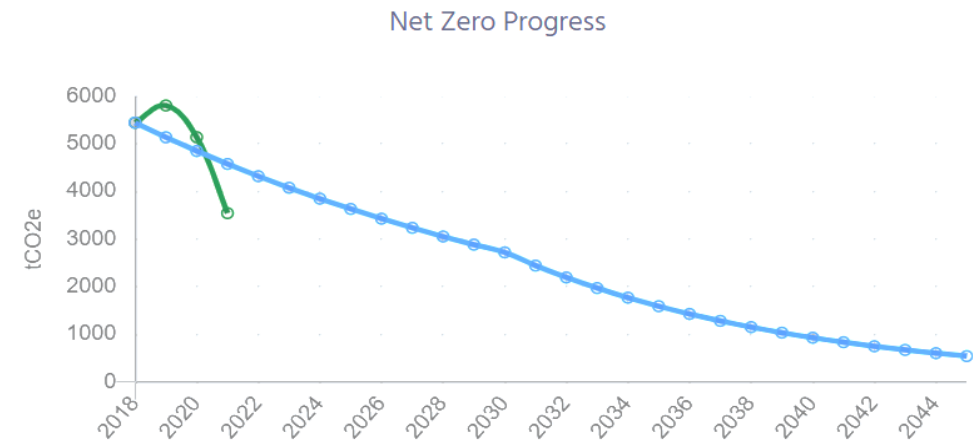
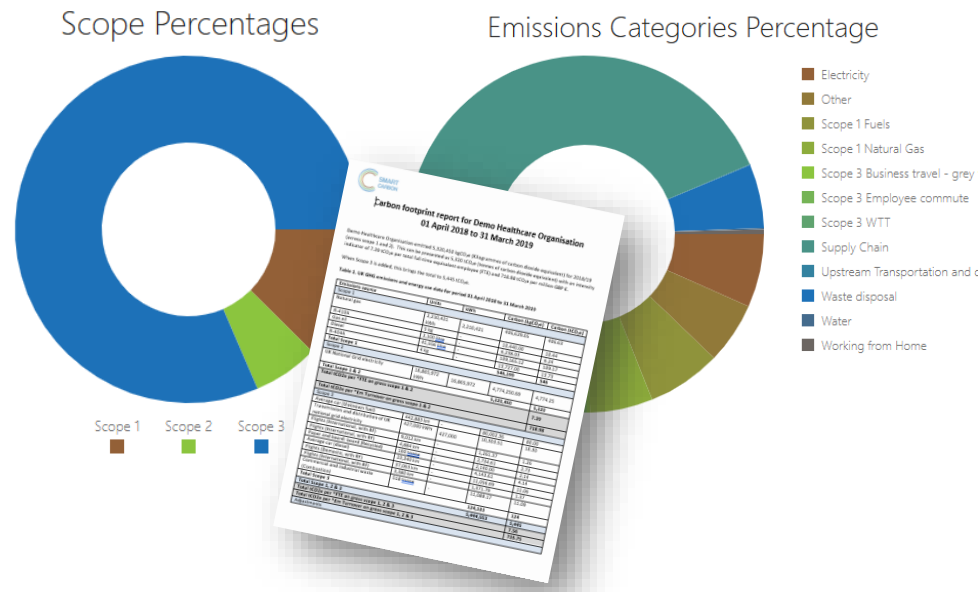
# WHAT YOU WILL GET FROM SMARTCARBON

## 1. Baseline Carbon Footprint

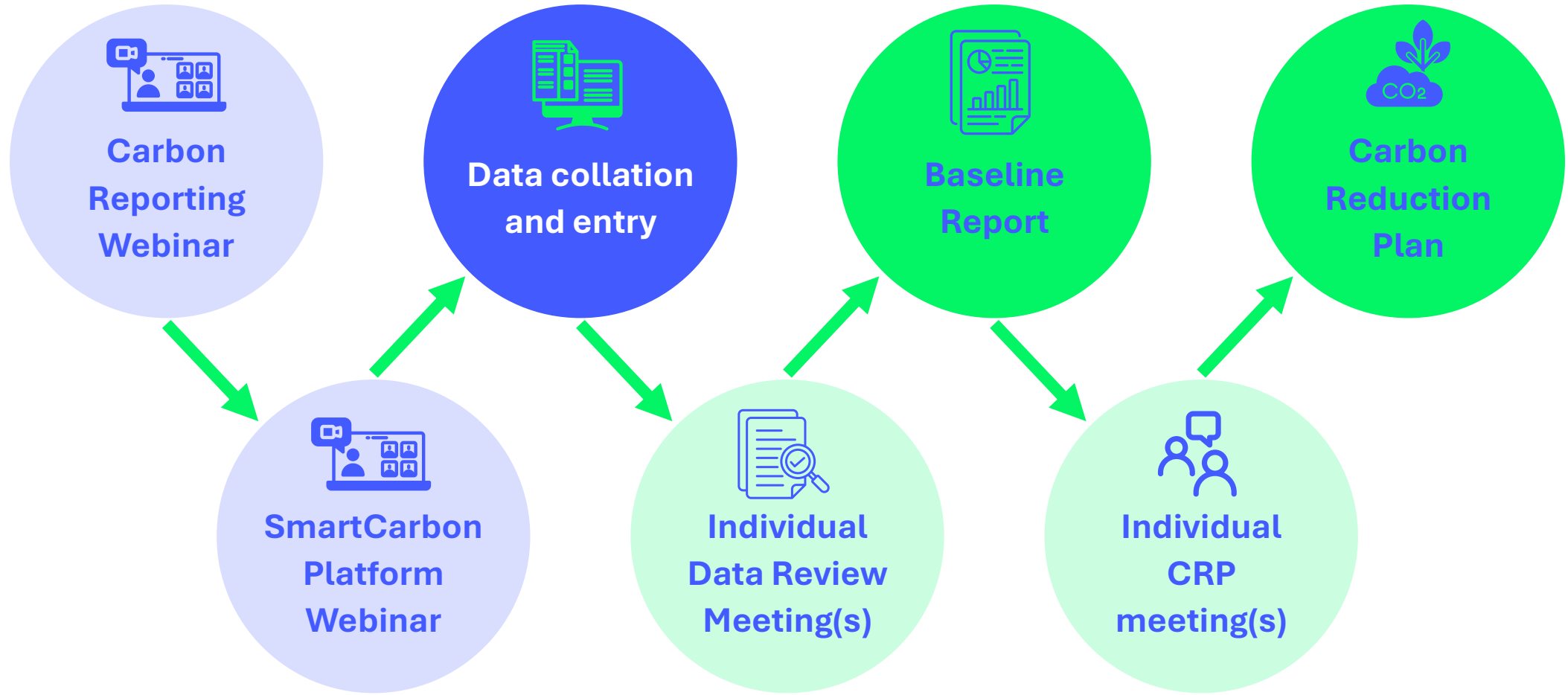
- Online account (SmartCarbon calculator)
- Total footprint with split by scope and emission category
- Downloadable baseline report

## 2. Carbon Reduction Plan (CRP)

- Net Zero target date and pathway
- Priority actions for emission reduction
- Collated into a Carbon Reduction Plan report (PPN 006 compliant)



# WHAT YOU WILL GET FROM SMARTCARBON



# LEVEL OF SUPPORT

**Free support via funded programme – our approach provides guided programme for report completion:**

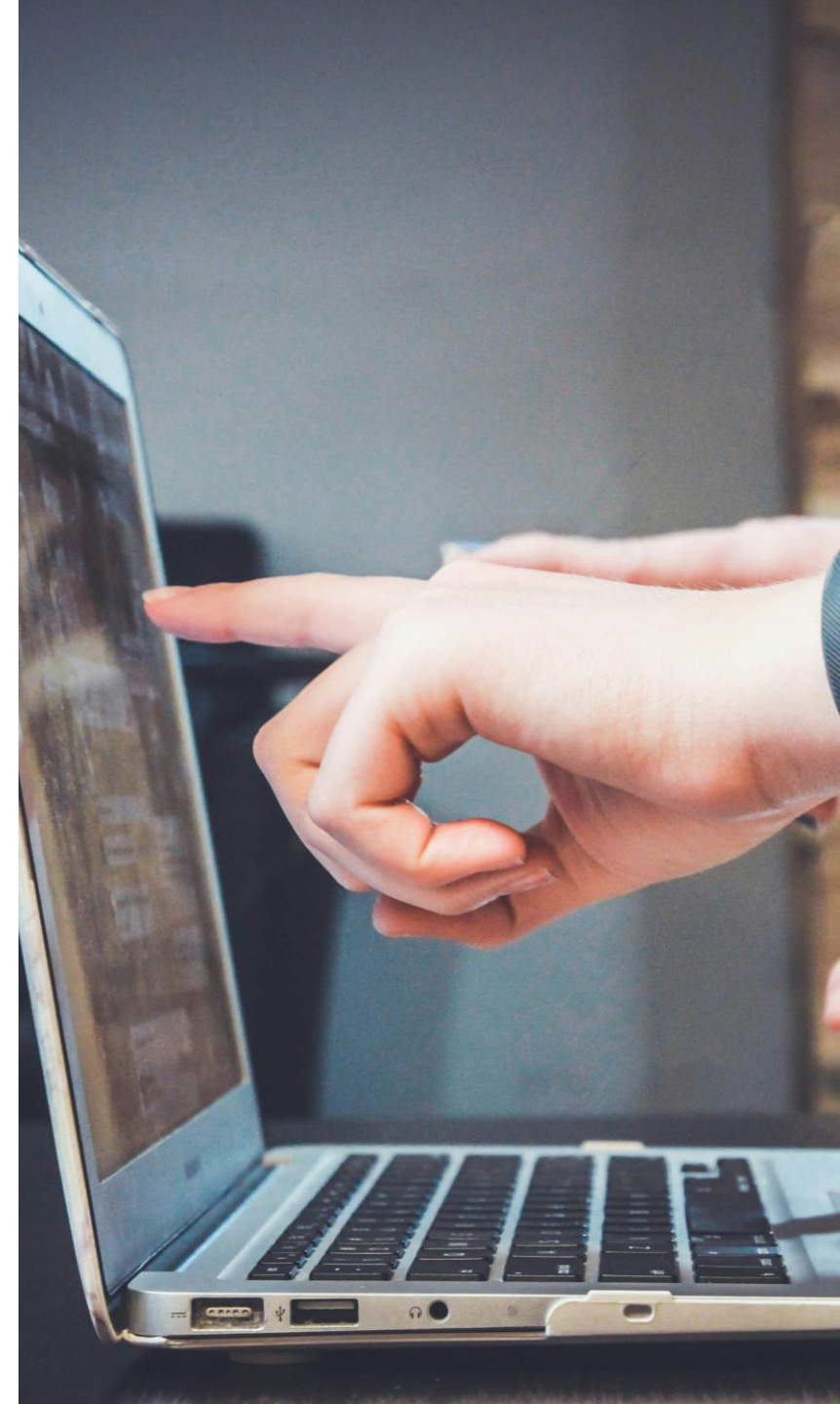
- Understanding your organisation's profile via online form
- Pre-configured reporting template – PPN 006 compliant, balancing reporting ease and accuracy
- Option to use SmartCarbon Lite – simple version for small / micro-organisations
- Training and platform onboarding is via group webinars
- Webinars recorded and slides shared as 'instruction manual'



# LEVEL OF SUPPORT

- Empowering you to collate and enter your data accurately (not doing it on your behalf)
- Individual data review meeting(s) – answering questions and sense checking data (not checking accuracy)
- Carbon Reduction Plan – identifying priority decarbonisation actions (not quantifying reduction potential)

**Happy to take on organisations as individual (paying) clients if more in-depth support is required**



# SIGNING UP

## 1. Complete the form:

- Visit [poweringchange.urbanforesight.com/about](https://poweringchange.urbanforesight.com/about) and fill in your details

## 2. Receive your account details:

- We'll configure your account and email you your login information

## 3. Book a data review meeting

- Check your inbox for an introductory email with a link to schedule your first data review session



# QUESTIONS



# POWERING CHANGE

# KEY DATES



# WEBINAR / EVENT DATES

Introduction	Thu 28 <sup>th</sup> Aug	Zoom (slides and intro catch up available online – note slides have been updated for the repeat session in October)
Carbon Reporting (repeat)	Thu 2 <sup>nd</sup> Oct	Zoom (slides and catch up available online)
SmartCarbon Platform	Tue 23 <sup>rd</sup> Sep, 2:00pm – 3:30pm	Zoom (slides and catch up available online)
In-Person Event	Fri 26 <sup>th</sup> Sep, 10:00am – 4:00pm	Council Chambers, Kettering (slides available online)
Carbon Reporting (repeat)	Thu 2 <sup>nd</sup> Oct	Zoom (slides and catch up available online)
Introduction (repeat)	Tue 7 <sup>th</sup> Oct	Zoom (slides available online)
SmartCarbon Platform (repeat)	Thu 9 <sup>th</sup> Oct	Zoom (slides available online)
Carbon Reporting (repeat)	Thu 6 <sup>th</sup> Nov	Zoom
SmartCarbon Platform (repeat of today)	Thu 13 <sup>th</sup> Nov	Zoom

# POWERING

SAVING ENERGY ACROSS  
NORTH NORTHAMPTONSHIRE



# CHANGE

GRANTS AND SUPPORT FOR BUSINESS AND COMMUNITY  
ORGANISATIONS TO SAVE ENERGY AND CUT CARBON



Funded by  
UK Government



Urban  
Foresight



North  
Northamptonshire  
Council



Smart  
Carbon